



## June 2025

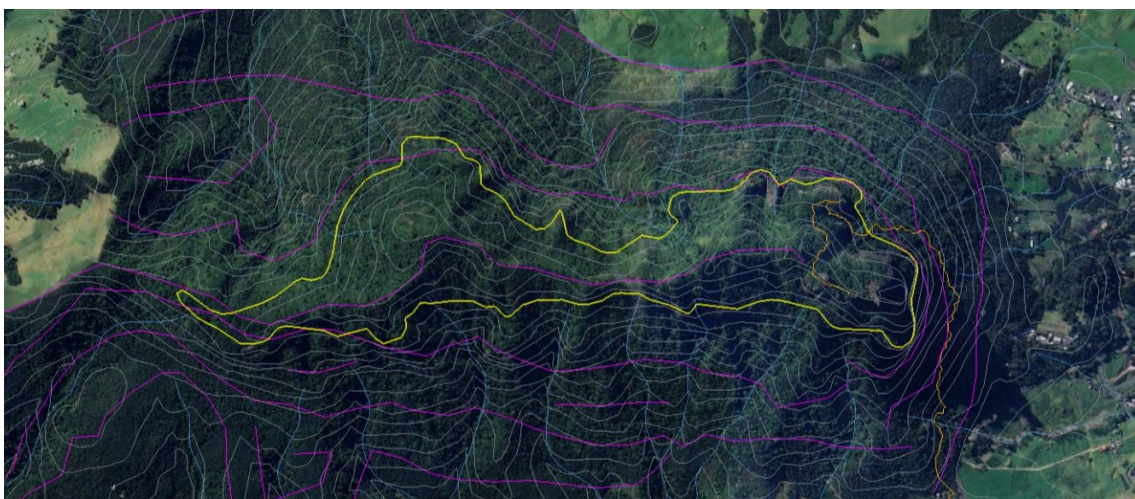
The weed work never stops and this last month saw several collaborative efforts across the community providing a boost to Weed Action volunteer groups' regular outings. The team and trust have also been busy working on Strategic Weed Sites/Species, providing initial feedback to the upcoming [Northland Regional Council Regional Pest Management Plan](#) review, and planning for our first large scale foray into restoration planting at Reotahi in July.

## Maunga Manaia - Threatened Species

This major landscape-level project continues to develop and deepen our understanding of local biodiversity. We are now into Year 2 of this project, which is supported by funding from the [Department of Conservation](#) and led and delivered by Weed Action Native Habitat Restoration Trust and [Aki Tai Here](#). Working on the highly significant Maunga Manaia is understood as the privilege that it is, particularly with activity being focused on the areas above 300m altitude.

Over the last 3 months, the operational team have continued to upskill in threatened species management and initiated survey methods to locate, map and assess the threatened species. Over the duration of this work, they are also surveying and delimiting key ecological weed species in the area, controlling if practical due to the steep and difficult terrain being worked in. Sites of dense pest plant infestations, especially of wild ginger and elaeagnus, have been mapped for future control work.

**Report excerpts and map image (yellow line encompasses survey area) by Tekaurinui Parata and Aki Tai Here.**





## Strategic Weed Action Team Report

The hardy SWAT volunteers had a chance to cover new ground in May, teaming up with members of the Headland Farm Park environmental group to tackle weeds on the inner slopes of the peninsula. A fantastic turnout saw 11 skilled workers cover about a hectare of steep kikuyu clad slopes. These were heavily infested with moth plant and littered with tobacco weed and brush wattle, but by fanning out and working upwards from the shore, this was all cleared in time for morning tea.

Thanks to the Headland Farm Park team for having us!



## DOC Wednesday Group

We were the lucky recipients of extra weeding volunteers from the [DOC Volunteer Wednesday](#) programme. It was great to welcome a lot of familiar faces from all over the Whangārei district, plus several new and keen ones. We returned to our usual haunt at Darch Point, with a range of weedy species to tackle and a corresponding range of methods to encompass all skill levels.

Over the years this collaboration has seen the reduction of infestations of Cape Honeysuckle, Japanese Honeysuckle, moth plant, Queen of the night, and more. Local resident Logan Carter contributes hundreds of hours each year to this walkway reserve, but the boost of added hands is encouraging.

Darch Point also contains one of our high priority madeira vine sites and the DOC team worked tirelessly to remove this over the course of the day. Thanks to Abby from DOC and the 10 volunteers who came from far and wide to support habitat restoration at Darch Point.







## Madeira Vine Sites

Over the last four years Weed Action has received and recorded multiple sightings of [Madeira/Mignonette Vine](#) on private and public land. We have to date identified 15 sites across the Whangārei Heads and Parua Bay area. The map below indicates the locations. Infestations range in size from only a few square metres to up to 300 square metres. Weed Action is working closely with Northland Regional Council who are supporting our efforts to manage some of these sites.



## Madeira Vine Management

As above, Weed Action are recording, mapping and actively managing madeira vine sites across Whangārei Heads, according to priority need. There are four sites receiving our control efforts currently. Two are located close to a shoreline or stream so represent a threat to spreading via waterways and the harbour. The largest by far is estimated by Weed Action's Mike Ulrich to be over 10 years old and has been hiding in plain sight draped over a significant rock outcrop at Reotahi, above the Beach Road entrance to the walkway. How did it get there? Madeira vine does not set seed in New Zealand, so it's main means of dispersal is from garden waste incorrectly disposed of,

or a slight possibility of birds collecting plant matter for nests.

In early May, Mike and Kate spent several hours removing madeira vine from the Reotahi site and the photos show the huge clusters of rhizomes present. Each of these can produce more vines, so the most effective method of control is removal of all plant matter. This site will take several years of control work to be cleared.



## Upcoming Events and Planting Days

There are plenty of habitat restoration activities to keep you busy this winter!

### PLANTING

**Bream Head/Te Whara Conservation Trust Planting Day - Sunday 15 June**  
8:45am - Urquhart Bay Carpark

**Weed Action Reotahi Matariki Planting Day - Sunday 13 July 9am** - Beach Road Carpark, Reotahi

### WEED CONTROL

**Parua Bay Weed Action Group - Saturday 14 June 9am** - Parua Bay Community Centre and Sports Field

**Reotahi Working Bee - Date change TBC due to BHCT Planting Day clash** - contact [info@weedaction.org.nz](mailto:info@weedaction.org.nz)

**Ocean Beach Landcare Group - Thursday 19 June 9am** - Ocean Beach Lower Carpark

**Manaia Bush Recovery Group - Monday 22 June 9am** - McLeod Bay The Green

**Tamaterau Reserve Landcare Group - Tuesday 24 June 9am** - Tamaterau Reserve

**Smugglers Track Crew - Monday 6 July 2024 9am** - Urquhart Bay Carpark

## Papakarahi Nursery

Many of you will be familiar with the amazing work of Papakarahi Nursery at the Nook, and Weed Action is grateful for their support in providing 600 plants for our upcoming planting days at Reotahi and McLeod Bay. In early May we paid a visit to the nursery to see the team preparing the thousands of seedlings they share with the community



every year. Thanks to Jennifer for showing us around and to the volunteers for allowing us to take some photos.



## Phillip King

The team at Weed Action, along with many in the Whangārei Heads community, were extremely saddened to hear of the passing of Phillip King, a founding member of Weed Action and the Whangārei Heads Landcare Forum, and co-founder of Papakarahi Nursery. He and Jeanette's contribution to building a conservation community in the Heads is still going strong. We thank you both.

## Whangārei Heads School Bush Track

We are pleased to continue building on our relationship with Whangārei Heads School and the restoration of the significant area of bush below the school. It is both a blessing and a curse to have so much native bush in your school grounds, as several recent track-cutting exercises led by teacher Dane Higgison and Tom Grinsted from Bream Head/Te Whara Conservation Trust have revealed some stunning bush and some unfortunate weed presence. The kids can now walk the track in supervised sessions, and we look forward to helping the school community manage the invasive weeds over time!







## Manaia Bush Recovery Group Report

The Manaia Bush Recovery Group (MBRG) continue to extend their reach into new ground along the outer areas of the historic Watercare lands on Mount Manaia in McLeod Bay. The small team covered approx 0.8 ha of the rough gorse/ pampas/ tobacco weed badlands below the access track, controlling elaeagnus, ginger, tobacco plant, Queen of the night, bangalow palm and the odd Taiwan cherry. A monster banana passionfruit was controlled near the top of the block. Thanks to recent rain it was wet going and provided the chance for some careful stream crossings.



With thanks to our community, ratepayers and major funders and supporters at Northland Regional Council, Department of Conservation, Lottery Grants Board, Cut 'n' Paste Weedkiller Gels and Whangārei District Council.



If you were forwarded this email, please sign up here